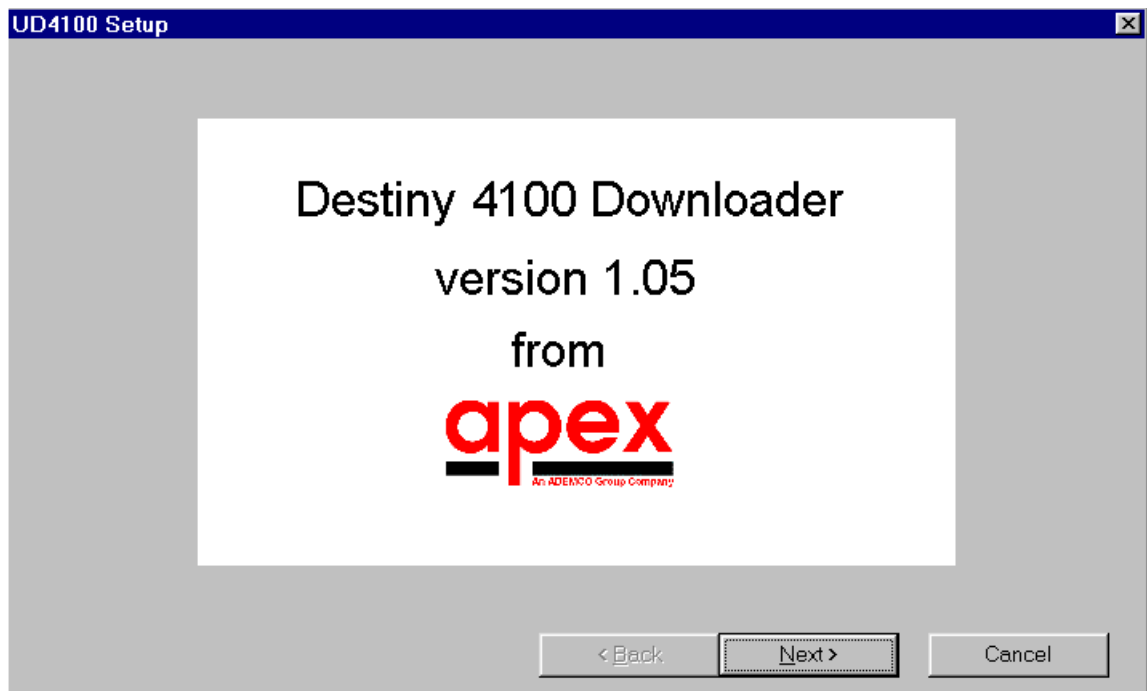
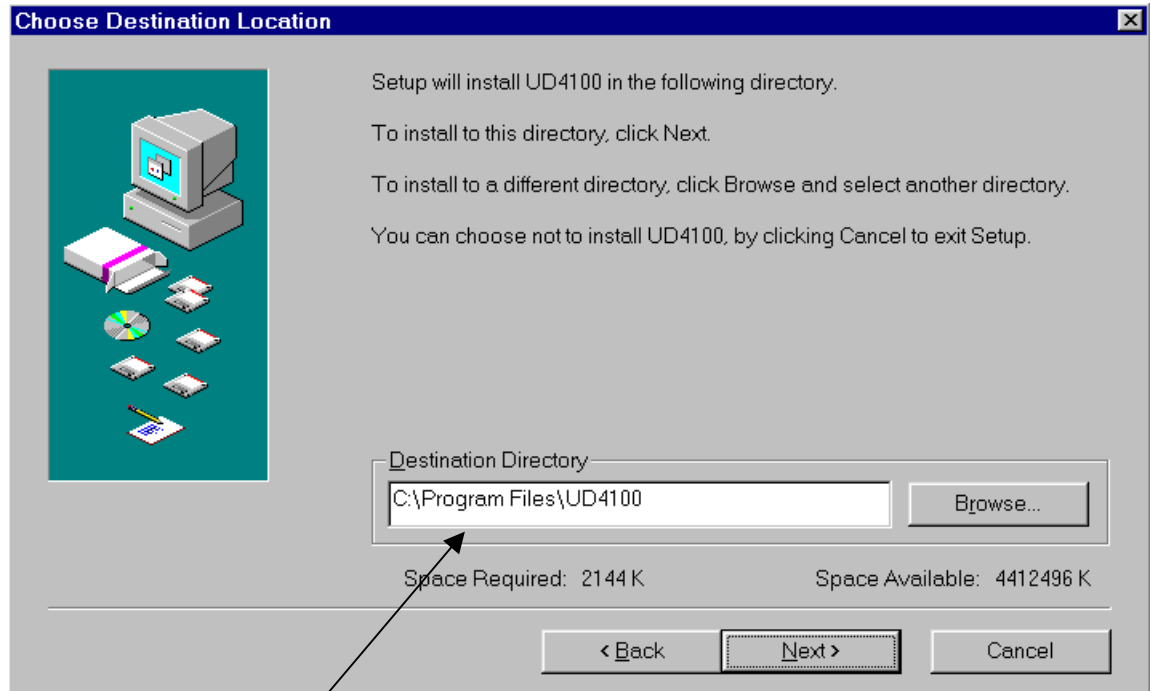


First step, click on setup.exe file.
The following screen will appear.
Simply click on next.

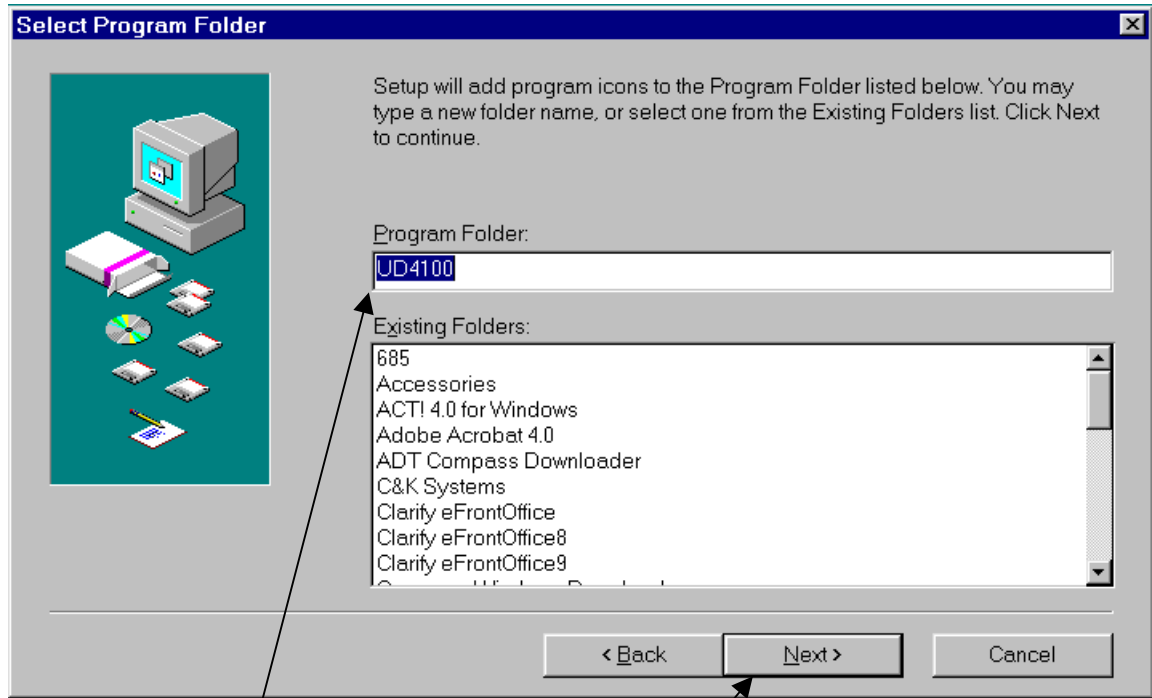




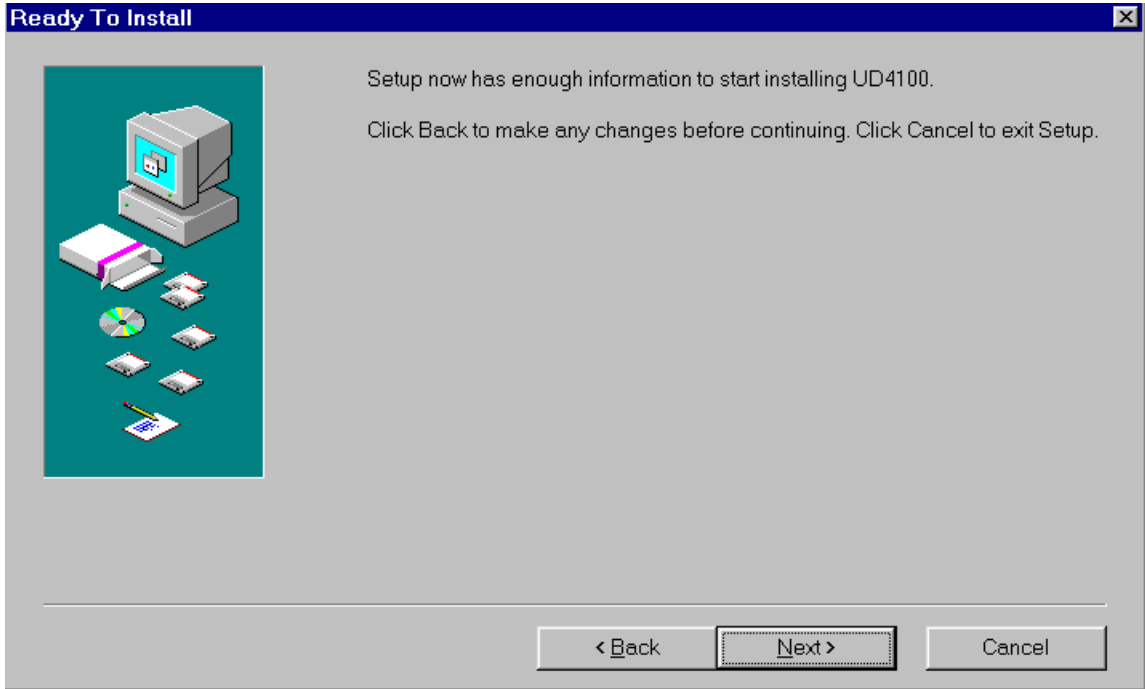
Make sure all applications are closed and then click On next.



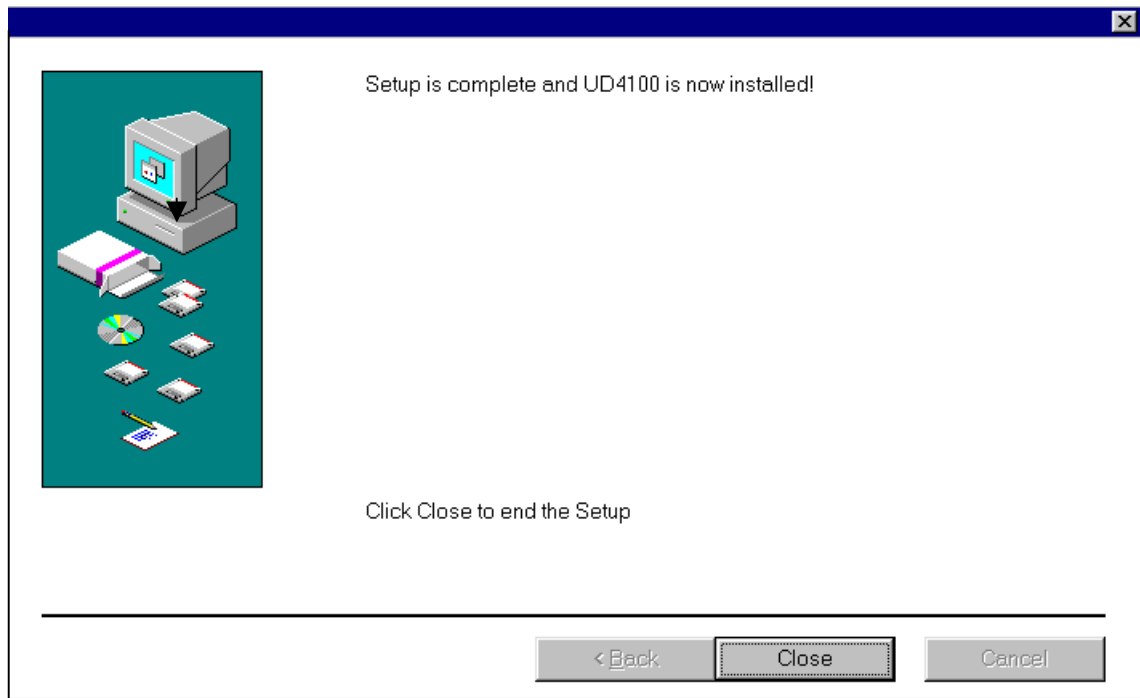
Chose the directory location you wish to store to store the program. As a norm, choose the default option.



Verify folder is correct. Then click next.



Click on next to continue installation.



Click close, now you can run the program to direct wire or remote download to panel. Make sure modem that is being used has been defined in windows. See the document in U/D 4100 software of clarify for generic modem setup.