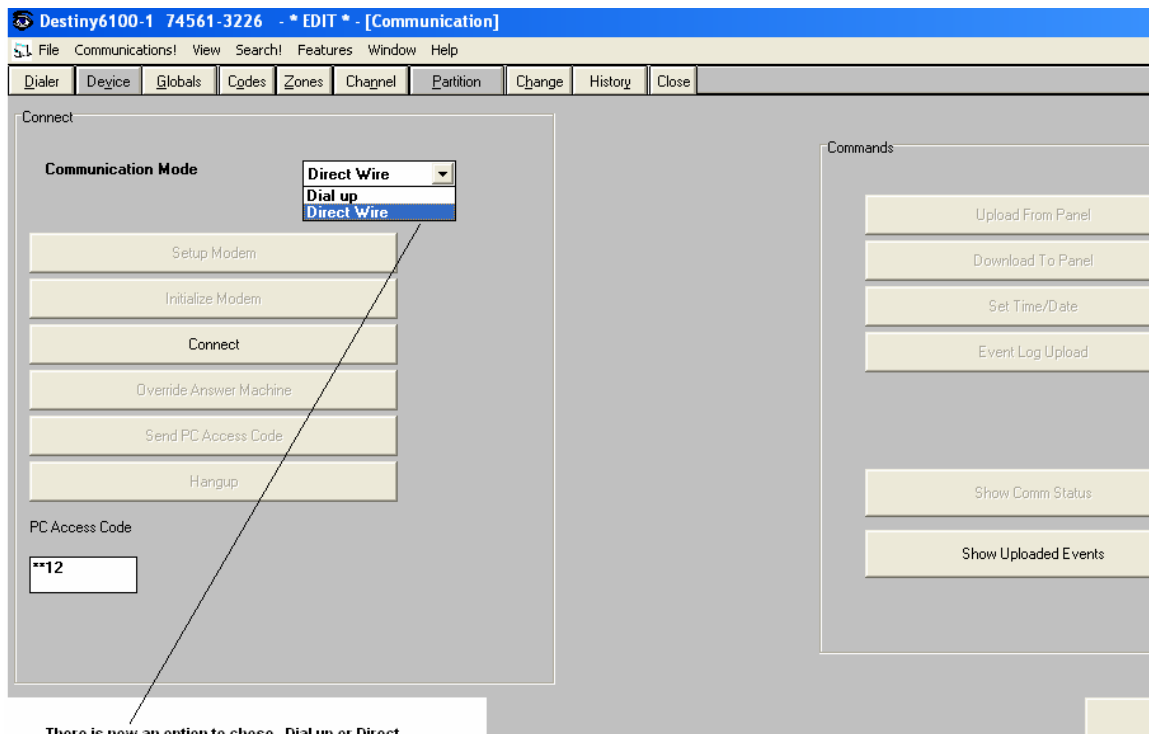


HOW TO DIRECT CONNECT TO THE 6100 USING RS232

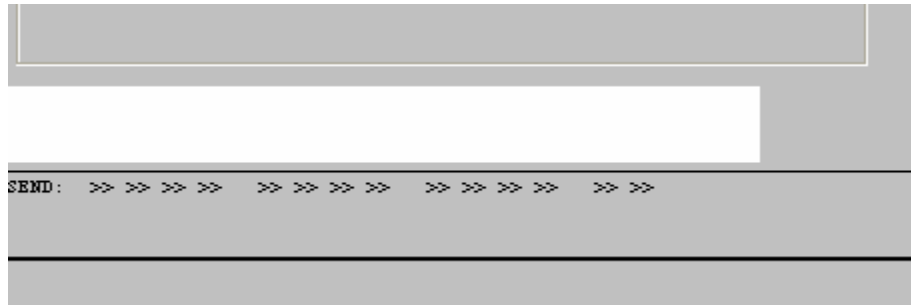
Requirements: Compass version 1.5.8.50 or later
RS232 board, which must be enabled in panel programming
Panel revision 8.07 or later

This type connection uses no “**modem**”; the connection is RJ45 of the RS232 board to 9 pin serial port of the pc using a DB9. A modem must still be assigned to the correct com port in compass allowing Compass to see the RS232 connection. If the pc does not have a true 9pin serial port, a USB converter may be needed. The following were tested by tech support on an XP machine; they may or may not work. Keyspan USA-19HS, Belkin F5U103, USB232.

- 1) Open a 6100 account in Compass and open the communications screen.



2) Select Direct Wire, then connect, you should see information being transferred.



3) If the message below occurs and all criteria mentioned in the message is correct, try powering the panel down and back up, then try again. If you successfully connect, the options on the right side of the screen, i.e. upload from panel, download to panel, will be selectable.

